

Thanks to:
 Mr DS & Mrs G Bradford, Mr M & Mrs C Potts,
 Mr K & Mrs C Hart, Mr G & Mrs F Alcock,
 Mr J & Mrs L Young, Mr T & Mrs T Wiles, CALM.

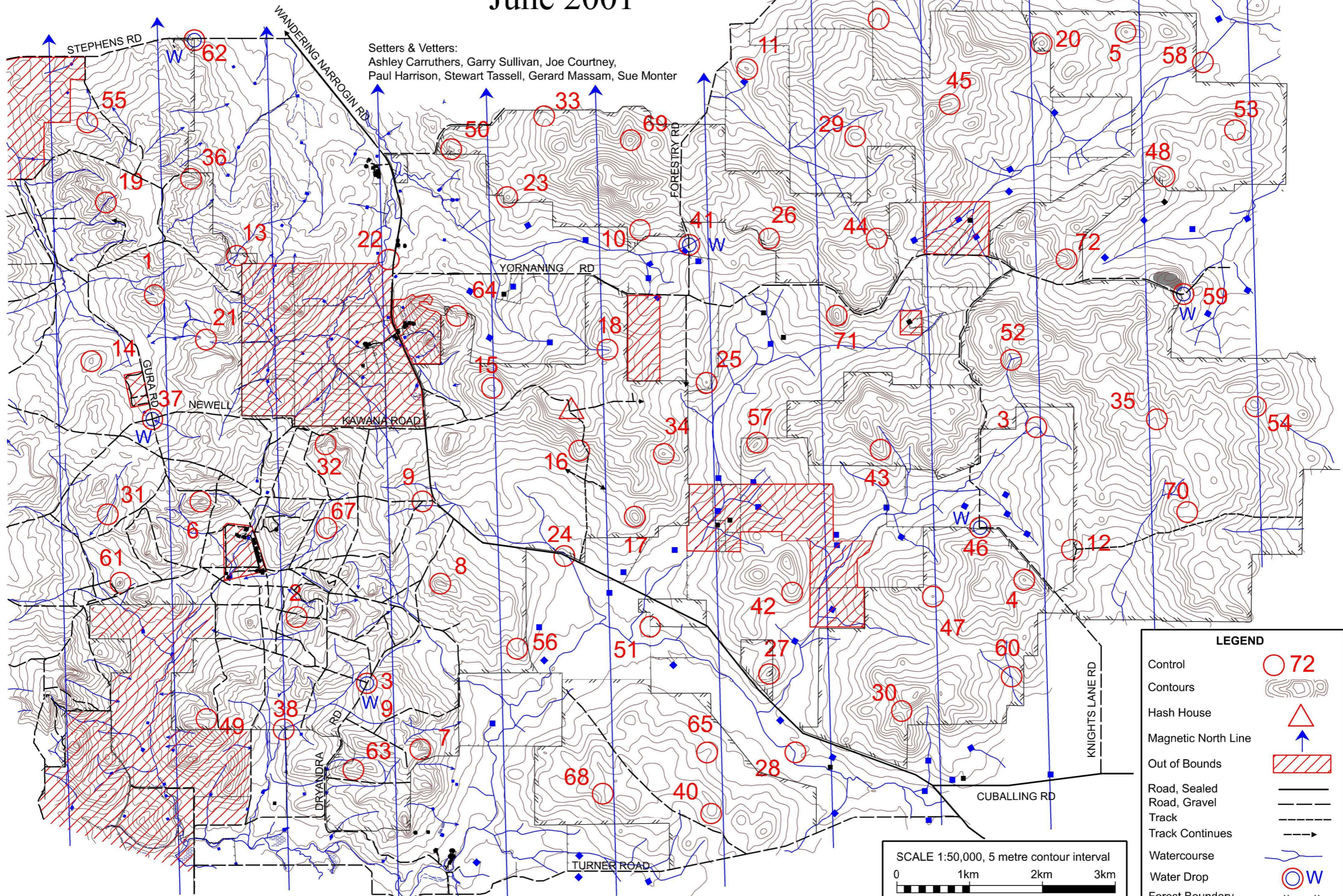
This map was produced using OCAD based on data supplied by DOLA and used under copy license 393/93.



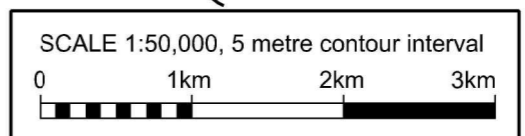
The Western Australian Rogaining Association presents....

Murphy's Mayhem State Championships June 2001

Setters & Veters:
 Ashley Carruthers, Garry Sullivan, Joe Courtney,
 Paul Harrison, Stewart Tassell, Gerard Massam, Sue Monter



LEGEND	
Control	○ 72
Contours	
Hash House	△
Magnetic North Line	↑
Out of Bounds	
Road, Sealed	—
Road, Gravel	- - -
Track	- · - · -
Track Continues	- · - · - →
Watercourse	
Water Drop	○ W
Forest Boundary	
Fence line	



Possession of this map does not give right of entry to the area.



Lynch's Mayhem. WARA State Champs 24 Hour. 2nd and 3rd of June 2001

No.	Description	Points	No.	Description	Points	Important Information	
1	The Watercourse	10	43	The spur	60	Control Cards From 1130 Saturday	
2	Head of a watercourse	10	44	The saddle	60		
3	The bend in the watercourse	10	45	The spur	60		
4	The knoll	10	46	The road bend	60		
5	The knoll	10	47	The knoll	60		
6	The knoll (rocky)	10	48	The knoll, eastern edge	60		
7	Head of the gully	20					Briefing 1145 Saturday
8	The knoll	20	49	The breakaway	70		
9	The Track junction, north side	20	50	The west knoll	70		Start 1200 (Midday) Saturday
10	The broad spur	20	51	The fence corner	70		
11	The knoll	20	52	The watercourse junction	70		Finish 1200 (Midday) Sunday
12	An old farming contraption	20	53	The saddle	70		
			54	The knoll	70		
13	The Watercourse Junction	30				Hash House Opens at 1600 Sat Closes at 1330 Sun	
14	The knoll	30	55	The Watercourse bend	80		
15	The knoll	30	56	The spur	80		
16	The spur	30	57	The knoll (northern end)	80		
17	The knoll	30	58	The bend in the watercourse	80		
18	The gully	30	59	The road bend	80		
			60	The Watercourse Junction	80	Average temp 7-17	
19	The gully	40				Chance of rain: 2mm=25%, 10mm=8%	
20	The knoll	40	61	The knoll	90		
21	The saddle	40	62	30M south of forest.road boundary	90		
22	Ruins	40	63	The spur	90	Sunset 17:14	
23	The knoll, Eastern end	40	64	Head of a gully	90		
24	The fence corner	40	65	The spur	90	Moonrise 14:58	
25	The knoll	40	66	The spur	90		
26	The spur, western edge	40					
27	The knoll	40	67	The spur	100	Moonsset 3:56	
28	The bend in the watercourse	40	68	Head of a gully	100		
29	The knoll	40	69	The knoll	100	Sunrise 7:07	
30	The saddle	40	70	The spur	100		
			71	The knoll	100		
31	The watercourse	50	72	The spur	100	Late Penalty 10 points per minute or part minute	
32	The gully (head of)	50					
33	The spur	50				Controls Used 72	
34	The knoll	50					
35	The small breakaway	50				Total Points 3900	
36	The spur	50					
37	The Track junction	60					
38	The track/creek junction	60					
39	The track junction, SE	60					
40	Rocky ridge - southern end	60					
41	The track/watercourse junction	60					
42	The spur	60					